

# NORLINK

SMART CRANE SYSTEM

SMART. CONNECTED. SECURE.

At American Crane & Equipment Corporation, we are passionate about delighting our customers. Our mission is to make your lives easier. Our vision continues to be the overhead lifting company most respected for our people and products – staying on the cutting edge of technology and systems that enhance our depth of services and our customer relationships. The NorLink Solutions™ line of products are no exception to this, as we launch the latest innovations to aid in real-time monitoring of your cranes and other equipment.



## KEY BENEFITS

### DETAILED MONITORING

- Peace of mind, one-way data flow from the crane minimizes security risk
- Allows Long-Term Trending/  
Comparison of Operational Data

### FLEXIBLE IOT INFRASTRUCTURE

- Customizable/ Scalable from Crane to Crane

### ENHANCED MAINTENANCE

- Remote Monitoring of Speeds/  
Amperages/Fault Status
- Curated features and tools that enable both preventive and predictive maintenance practices.

### EVENT-BASED COMMUNICATIONS

- Getting the Right People the Right Information at the Right Time
- Customizable email and text message notifications for events of interest

## KEEPING IT ALL CONNECTED

Our goal is to do more than the remote monitoring of your overhead cranes – we also provide solutions for your other equipment, via our MHIOT Device, getting you real-time data and minimizing downtime.



## PRODUCT SPECIFICATIONS

### Smart Crane System Architecture

- Reads pertinent data from VFD Controls
- Load cell accurately senses the amount of load present during operation
- Analysis of Crane Usage and Sensor Information in the cloud
- Event-Based E-Mail Notifications
- Historic Usage Records

### Cloud User Interface

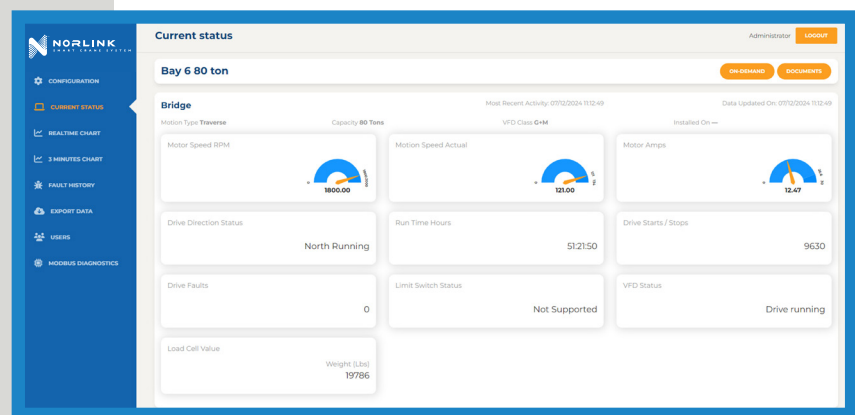
- Dashboard – “Heart of system”
- Allow Determination of CMAA Usage Class (A-F) based on actual operation
- Allow Monitoring/ Predicting Component Life Based on:
  - Speed (RPM)
  - Run Time
  - Loading
- Features for Tracking Time & Usage to accurately enable Preventive Maintenance Practices
- Historical operational data to enable Predictive Maintenance Practices
- View Crane Usage Trends Over Time
- Access to Crane-Specific Design Documentation, Inspection reports, User manuals
- Remote User(s) Multiple modes of access: Computer/ Web Browser or Mobile Device

### Edge User Interface

- High resolution, real-time data as well as recent historical data
- Limit switch status
- Real Time Drive Fault Monitoring & Fault History Reports
- User-friendly – Provides Chart View or Table View of Real-Time Data
- Local User(s) Access: Computer/Web Browser or Mobile Device
- Custom Notifications
  - E-Stop Events
  - Overload Events
  - Motor Over Current Events
  - Customizable Events

## THE NEXT GENERATION OF IoT SOLUTIONS FOR YOUR EQUIPMENT

The NorLink Solutions™ Smart Crane System is for remote asset monitoring, improved performance, predictive maintenance and minimization or elimination of downtime through cloud-based analytics.



## YOUR SMART SOLUTIONS PARTNER

For smart crane solutions you can trust, turn to the experts at ACECO! We are your expert, craftsman, and partner for all material handling equipment needs.

To learn more about our NorLink Solutions™ product offerings or discuss your product requirements with one of our representatives, contact us or request a quote today.